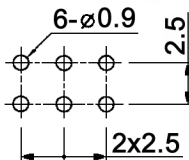
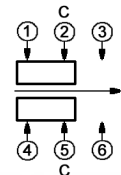


HOLE LAYOUT $\Phi 0.05$



CIRCUIT DIAGRAM



C: COMMON PIN
BOTTOM VIEW

Specifications:

- Contact rating: 0.3A, 30V DC
- Contact resistance: 20mOhm max.
- Insulation resistance: 100MOhm min. at 500V DC for 1 minute
- Dielectric strength: 500V AC for 1 minute (50/60Hz, 2mA)
- Operating temperature: -25°C to +85°C
- Storage temperature: -40°C to +85°C
- Mechanical life: 10 000 cycles min.
- Operating force: 200gf +/-100gf
- Solderability: 230 +/-5°C, 3 +/-0.5sec.
- Soldering heat resistance: auto soldering: 260 +/-5°C, 5 +/-1sec.
- Material: Terminal: brass strip, silver plated
Base: phenolic resin, natural
Frame: SPCC, zinc
Contact clip: C5210R-EH, silver plated
Steel ball: carbon steel, natural
Spring: SWC, temper
Slider: PBT, black

Compliance: RohS III (2015/863/EU)

Tolerances: up to 10: ±0.2mm above 10-50: ±0.3mm		Date	Name	<h1>MFP 2220</h1>
		03/07	dr	
			knitter-switch	<h2>30 10 77</h2>
Storage temperature	11/19	dr		Page 1/1
Modifications	Date	Name		